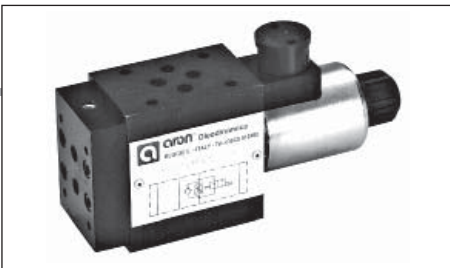


# A66... MODULAR FLOW CONTROL VALVES

## FAST / SLOW ASSEMBLY CETOP 3



A66...	
STANDARD CONNECTORS	CH. I PAGE 20
DC COILS	CH. I PAGE 72
QC32...	CH. III PAGE 2
SCREWS AND STUDS	CH. IV PAGE 21

### ORDERING CODE

<b>A</b>	Speed control valve
<b>66</b>	Size
<b>E</b>	Electrical operator
<b>***</b>	<b>120</b> = Normally open <b>121</b> = Normally closed See table hydraulic symbols
<b>*</b>	Control on lines <b>A/B/P/T</b> (see symbols) The interface holder "H" must be turned by 180° in order to obtain the <b>A1</b> and <b>B1</b> versions.
<b>*</b>	Voltage: see tab.1
<b>**</b>	Variants: see tab.2
<b>4</b>	Serial No.

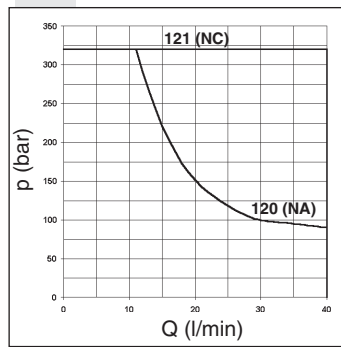
This is modular assembly ON/OFF solenoid valve which, by fitting suitable 2 way regulator, allows two speed operation in the same system via an electrical changeover command.

**The flow rate regulator type QC32... must be ordered separately.**  
**The operational limit curves have been obtained with the regulator fully closed, and those same limits improve gradually with the opening of the regulator.**

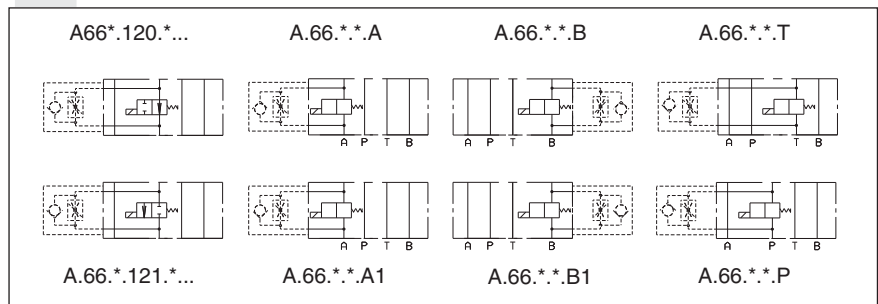
Max. operating pressure	320 bar
Hydraulic fluids	Mineral oils DIN 51524
Fluid viscosity	10 ÷ 500 mm <sup>2</sup> /s
Fluid temperature	-25°C ÷ 75°C
Ambient temperature	-25°C ÷ 60°C
Max. contamination level	class 10 in accordance with NAS 1638 with filter $\beta_{25} \geq 75$
Weight	2,4 Kg

The test have been carried out at operating temperature, with a voltage 10% lower than rated voltage and with a fluid temperature of 50 degrees C. The fluid used was a mineral based oil with a viscosity of 46 mm<sup>2</sup>/s at 40 degrees C.

### LIMITS OF USE



### HYDRAULIC SYMBOLS



### TAB.1 VOLTAGE

D15 COILS (IN DC - 30W) **	
L	12V
M	24V
V	28V*
N	48V*
Z	102V*
P	110V*
X	205V*
W	without coils

115Vac/50Hz  
120Vac/60Hz  
with rectifier

230Vac/50Hz  
240Vac/60Hz  
with rectifier

Voltage codes are not stamped on the plate, their are readable on the coils.

\* Special voltage  
\*\* Technical data see Ch. XII • 4

### TAB.2 - VARIANTS

No variant (without connectors)	S1(*)
Viton	SV(*)
Other variants available on request	

(\*) Coils with Hirschmann connection supplied without connectors. The connectors can be ordered separately, Ch. I • 20.

### OVERALL DIMENSIONS

