

## OUTLET MODULE UNITS WITH OVERCENTER AND TOP PORT



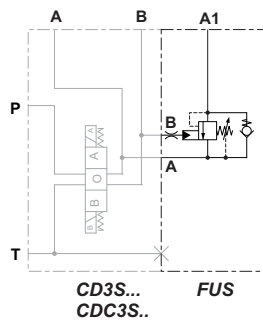
Outlet module FUS3 includes an overcenter valve to control the movement of a cylinder end connected to port A1.

- Threaded ports (A1) sizes G3/8"
- Maximum flow 40 l/min.
- Aluminum body.

### FEATURES

Max. operating pressure	250 bar
Max. Flow	40 l/min
Hydraulic fluid	DIN 51524 Mineral oils
Fluid viscosity	10 ÷ 500 mm <sup>2</sup> /s
Fluid temperature	-25°C ÷ 75°C
Ambient temperature	-25°C ÷ 60°C
Max. contamination level (filter β <sub>25</sub> ≥ 75)	ISO 4406:1999: class 21/19/16 NAS 1638: class 10
Weight	0.7 kg

### HYDRAULIC SYMBOLS

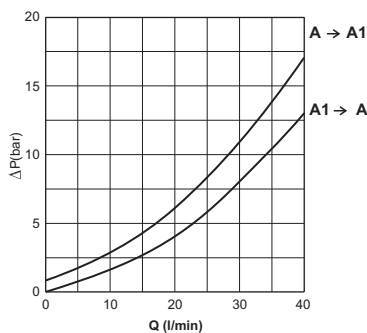


**Outlet module for directional control valve CDC3 and CD3 body "S" (see pages 25 and 35).**

### ORDERING CODE

<b>FUS</b>	Outlet module units with overcenter and top port
<b>3</b>	Size
<b>1</b>	Port size: <b>1</b> = G3/8"
<b>00</b>	No variant
<b>1</b>	Serial No.

### PRESSURE DROPS



### OVERALL DIMENSIONS

